



BREAKFAST MENU

February 2012

Monday	Tuesday	Wednesday	Thursday	Friday
		1 Sausage/Egg/Cheese Biscuit Fruit Milk Variety	2 French Toast Sticks & Breakfast Potatoes Fruit Milk Variety	3 Breakfast Pizza Fruit Milk Variety
6 Cereal & Toast Fruit/Juice Milk Variety	7 Biscuits & Gravy Fruit Milk Variety	8 Sausage/Egg/Cheese Biscuit Fruit Milk Variety	9 Bagel & Cream Cheese Fruit Milk Variety	10 Egg Wrap Fruit Milk Variety
13 Cereal & Granola Bar Fruit/Juice Milk Variety	14 Panini Fruit Milk Variety	15 Scrambled Eggs & Toast Fruit Milk Variety	16 Pancakes Fruit Milk Variety	17 No School
20 Cereal & Muffin Fruit/Juice Milk Variety	21 Omelet & Toast Fruit Milk Variety	22 Cinnamon Roll w/ Cheese Stick Fruit Milk Variety	23 Waffle Sticks & Breakfast Potatoes Fruit Milk Variety	24 Breakfast Pizza Fruit Milk Variety
27 Cereal & Toast Fruit/Juice Milk Variety	28 French Toast Fruit Milk Variety	29 Biscuits & Gravy Fruit Milk Variety		

School Breakfast

Breakfast is a good thing!

When students need to take achievement tests, schools strongly urge them to eat breakfast first on testing days to help them perform better and increase their concentration.

Let's help students to perform better every day, by making sure they eat a healthy breakfast at home or at school.

Meal Prices

Paid Breakfast \$1.30

Milk \$0.35

This institution is an equal opportunity employer



Holdrege Elementary Lunch Menu

February 2012

Monday	Tuesday	Wednesday	Thursday	Friday
		1 Spaghetti w/Meat Sauce & Breadstick Broccoli w/ Cheese	2 Tomato Soup w/ Grilled Cheese California Blend Cookie	3 Cheeseburger w/ Bun Green Beans
6 Chicken Fajita Peas	7 Chili w/ Cinnamon Roll Mixed Vegetables	8 Macaroni & Cheese Corn	9 Scalloped Potatoes & Ham Carrots Brownie	10 Cavatini French Fries
13 Heart Shaped Chicken Nuggets Peas Valentine Cookie	14 Pizza Hut Green Beans	15 Mandarin Orange Chicken w/ Rice Corn	16 Ham & Cheese Sandwich Mixed Vegetables Cake	17 No School
20 Chicken Nuggets Corn	21 Salisbury steak w/ Dinner Roll Mashed Potatoes w/ Gravy Dessert	22 Whole Wheat French Toast Sausage Patty Hashbrowns	23 Bread Beef Patty w/ Bun Peas Cookie	24 Italian Dunkers w/ Spaghetti Sauce Broccoli w/ Cheese
27 Tater Tot Casserole California Blend	28 Pizza Hut Peas Dessert	29 Popcorn Chicken Green Beans		

School Lunches

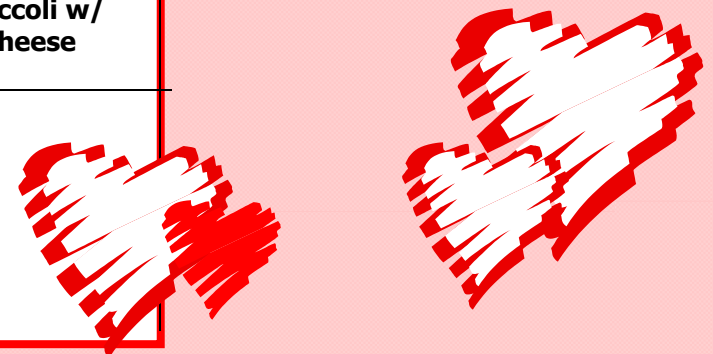
All lunches served include:
Choice of ½ pint (8oz)
1% white milk or
skim chocolate milk.
Salad Bar (featuring fresh
fruits & vegetables)

Meals must include 2-4 items:
* You must choose main entrée
* You may choose 1-2 sides
* You may choose 1 milk

Meal Prices

Student Lunch \$2.25
Adult Lunch \$2.85
Extra Entrée \$1.40
Extra Milk \$0.35

This institution is an equal
opportunity employer



HOPE - ORDER - MESS



- 2/1 Spaghetti w/Meat Sauce w/ Breadstick
Popcorn Chicken
Broccoli w/ Cheese
- 2/2 Breaded Chicken patty w/ Bun
Tomato Soup w/ Grilled Cheese
California Blend Veggie Cookie
- 2/3 Swiss Chicken Casserole.
Cheeseburger w/ Bun
Green Beans



- 2/6 Meatball Sub
Chicken Fajita
Peas
- 2/7 Chili
Grilled Chicken Sandwich
Cinnamon Roll
Mixed Vegetables
- 2/8 Macaroni & Cheese
Shredded Pork on a W/W bun
Corn
- 2/9 Mini Corn Dogs
Scalloped Potatoes & Ham
Carrots
Brownie
- 2/10 Pizza Hut
Cavatini
French Fries



- 2/13 Sloppy Joe on a bun or
Chicken Teriyaki w/ Rice
Peas
Dessert
- 2/14 Heart Shaped Chicken
Nuggets
Tuna Noodle Casserole
Green Beans
Heart Shaped Cookie
- 2/15 Mandarin Orange Chicken w/
Rice & Corn
Cheeseburger w/ Bun & Corn
- 2/16 Chicken Fajita
Ham & Cheese Sandwich
Mixed Vegetables & Cake
- 2/17 No School

Meal Prices

Student Lunch	\$2.45
Adult Lunch	\$2.85
Extra Entrée	\$1.40
Extra Milk	\$.35



- 2/20 Chicken Nuggets
Turkey Noodle Soup
Corn
- 2/21 Salisbury steak w/ Dinner Roll
Grilled Cheese Sandwich
Mashed Potatoes Gravy & Dessert
- 2/22 Whole Wheat French Toast &
Sausage Patty
Scrambled Eggs & Sausage Patty
Hashbrowns
- 2/23 Chicken Alfredo w/Breadstick
Breaded Beef Sandwich
Peas & Cookie
- 2/24 Italian Dunkers/ Spaghetti Sauce
Pizza Hut
Broccoli w/ Cheese



Check out the menu online at:
www.thedusters.org

School Lunches

All lunches served include:

Choice of ½ pint (8oz) 1% White Milk or Skim Chocolate Milk
Unlimited Salad Bar featuring Fresh Fruits and Vegetables

Meals must include 2-4 items:

- *You may choose a main entrée
- *You may choose 1- 2 sides
- *You may choose 1 milk

This institution is an equal opportunity employer

February

S	M	T	W	Th	F	S
			1	2	3	4
5	6	7	8	9	10	11
12	13	14	15	16	17	18
19	20	21	22	23	24	25
26	27	28	29			



- 2/27 Turkey & Cheese Sandwich
Tater Tot Casserole
California Blend Veggies
- 2/28 Chicken teriyaki w/ Rice
Crispito
Peas
Dessert
- 2/29 Popcorn Chicken
Fish Sandwich
Green Beans