



# HOLDREGE SCHOOLS

## Holdrege High School

PO Box 2002, Holdrege, Nebraska 68949  
(308) 995-6558  
Robert Drews, Principal  
Scott Schoneman, Activities Director

December 1, 2011

Dear Students and Parents,

It doesn't seem like we should be at the half-way point of the school year, but the end of the semester is quickly approaching. When stopping to consider all the accomplishments of our students so far, I think it's been a great year. In our activities, we've had state level qualifiers (Girls Golf / Boys Tennis / Cross Country / All-State Chorus) and conference or regional recognition for many students. In our classrooms, the kids have kept rolling with our young, but promising Laptops for Learning initiative, and we've begun to use other tools (LiveScribe pens/Google Apps/etc.) They now have even more options available for online collaboration and communication to move through the necessary content. In the area of assessment, we've gone through another round of MAP testing to help better quantify the academic strengths and needs for our students, while organizing our district-wide data teams to examine scores as they relate to our school improvement plan. In social/community domain, the Seniors have provided solid leadership, with the Freshmen quickly learning ropes in a new setting. Although we have had some disappointments along the way, our 11-12 school year has been very successful thus far. The challenge now will be avoid complacency with the status quo, and stay vigilant in our watch for new opportunities to learn and help these youth become productive members of society.

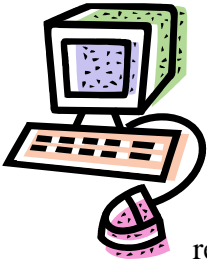
As we enter into this holiday season, we all need to pause for a moment and realize how many reasons we have to be thankful and how many opportunities we have to share with one another. On behalf of the faculty and staff at Holdrege High School, I'd like to wish everyone a happy and safe holiday season!

Sincerely,  
Robert Drews, Principal  
Holdrege High School

### ***IMPORTANT DATES AND TIMES:***

- December 2 - District One-Act Play Competition @ The Tassel
- December 14 - National Honor Society Induction @ The Tassel 11:00am
- December 13 & 15 - Vocal and Instrumental Concerts (respectively)
- December 22 - End of 1<sup>st</sup> Semester
- December 21-22 - Semester Testing Schedule (1:40/12:30 dismissals)
- December 23-27 - Gym Moratorium – No practice/contests in gym
- Dec. 23-Jan.2 - NO SCHOOL – Christmas Break
- January 3 - School Resumes for 2<sup>nd</sup> Semester

**SCHOOL DISMISSED FOR CHRISTMAS:** School will be dismissed at 12:30 pm on Thursday, December 22 to begin Christmas Break. School will not be in session from Friday, December 23, 2011, through Monday, January 2, 2012. School will resume as usual on Tuesday, January 3, 2012



**HHS DIGITAL NEWSLETTER**

In our continued search to communicate more effectively and more efficiently with our patrons and students, the HHS Newsletter will be going FULLY DIGITAL beginning with the January 2012 edition. The listing of those who have agreed to receive the newsletter by e-mail has grown such that we have now reached the tipping point for the reduced “bulk rate” with our hard copy newsletters each month. We have e-mail addresses for almost every household in our system, and will soon have individual student e-mail addresses that can be accessed as well. If you desire to have a printed copy of the newsletter sent to your home, we can still accommodate you. Simply return the form at the end of this newsletter and we will include you on a “paper-copy only” list to be sent out each month. This change should help us save resources to be better used for educating our students. Thanks for your support.

**Yearbook Senior Pictures OVERDUE?**

Seniors need to have their senior picture in to Mr. Buck by Dec. 1. If you have not turned one in to Mr. Buck, via e-mail or in person, contact him immediately. If we do not hear from you, we will place their school picture in the senior section of the yearbook.

**THREE RECEIVE ACTING AWARDS:**

The Holdrege High School one act cast and crew recently participated in the Central Ten Play Production competition at York High School. Three of the actors were recognized for their acting abilities and were given outstanding acting awards: Joe Burr, Seth Hald and Kendra Ritter. They will be competing in the District competition at The Tassel on Friday, Dec. 2 beginning at 9:00. Holdrege will perform at 9:45. Other schools in the competition are Adams Central, Aurora, Broken Bow, Central City, Cozad, Minden, and St. Paul.



Since this is an NSAA District event, no passes will be accepted. Adult admission is \$5.00 and students K-12 is \$4.00. The one admission is good for all eight plays.

**NSAA MORATORIUM:** The NSAA (Nebraska School Activities Association) has declared a moratorium from Friday, December 23<sup>rd</sup> through Tuesday, December 27<sup>th</sup>. During this time, schools are not permitted to schedule practices or contests. Also, gyms and other areas may not be opened for students to practice their sport, even if no coach is present.

**Yearbook Sales and Billing**

Many students have signed up to purchase yearbooks. The cost of the yearbook, \$45, can be paid in two payments. The first payment of \$22.50 is due Friday, December 2, 2011. The second payment is due January 20, 2012. Students may elect to pay the entire amount at one time also. Students may bring their checks, made out to Holdrege Schools, to Mr. Buck, yearbook adviser, or Mrs. Perry in the front office.



**Check your student's grades on the internet.  
Get your *Infinite Campus* password today!  
Call the Holdrege High School Office for details.**

**GRADING INFORMATION:** Holdrege High School awards credit for classes based on semester grades. Quarter grades are only an indicator of current achievement in the course. Consequently, 1<sup>st</sup> Quarter progress reports are only any indicator of the current grade for the student. No credit is awarded based on the 1<sup>st</sup> Quarter grade. At the end of the 1<sup>st</sup> Semester, December 22, students will be given a semester grade only. Credit will be awarded based on the semester grade and attendance. Students will not be given a 2<sup>nd</sup> Quarter grade as the semester grade is the grade the students have earned for the semester. ALSO – As there is no official quarter grade, there will no longer be an honor roll by the quarter. Honor roll will be determined using semester grades only.



**YEARBOOK SENIOR RECOGNITION ADDS:** Many parents purchased Senior Recognition Ads for the 2012 yearbook. If you still want to purchase one, please contact Mr. Buck, yearbook adviser, as soon as possible. There is limited space in the yearbook for these pages.



**Holdrege High School  
Semester Test Schedule  
Fall 2011**

December 21, 2011

Period 1	8:15 – 9:15
Period 3	9:20 - 10:20
Period 4	10:25 - 11:25
Lunch	11:30 - 12:30
Period 6	12:45 - 1:35

December 22, 2011

Period 2	8:15 - 9:15
Period 5	9:20 - 10:20
Period 7	10:25 - 11:25
Period 8	11:30-12:30

**HOLDREGE TO HOST HOLIDAY BASKETBALL TOURNAMENT:** The 8<sup>th</sup> Annual Holdrege Holiday Basketball Tournament is scheduled for December 29-30, 2011. Holdrege will play host to Hershey in the first round of both boys and girls competition. The girls will play at 4:30pm and the boys at 6:15pm on the 29<sup>th</sup>.



**JUNIOR CLASS SOUP SUPPER DEC. 16:** The Junior class will host a Soup Supper on Friday, December 16 during the boys and girls basketball games. There will be soup, sandwiches and desert available. Serving starts at 5:00pm in the HS cafeteria.

## Fall FFA Activities

The Holdrege FFA Chapter has had a busy fall with several opportunities for members to participate in a variety of activities. Late October ended with National FFA Convention and the theme of; “I Believe” eight chapter members attended the 84<sup>th</sup> National FFA Convention in Indianapolis IN, October 19<sup>th</sup> -22<sup>nd</sup>. The chapter members attended sessions where they listened to speakers such as Dave Roeber and Venice “Flygirl” Armour and retiring addresses of two National FFA Officers. The members participated in workshops and toured the Blues Spring Caverns, where they took an underground boat ride. The members enjoyed some free time by attending the Blake Shelton concert and going to the FFA Career Show which featured over 400 exhibitors from numerous agricultural companies and businesses

Also in October, chapter members competed at the District Land Judging contest in Alma, where Holdrege competitors had an outstanding day. Nick Anderson, a senior, placed 1<sup>st</sup> overall and brought home a purple ribbon. Senior Seth Hald placed 4<sup>th</sup> and also brought home a purple ribbon. The chapter had four members bring home blue ribbons, five red ribbons, and six white ribbons. The Holdrege Chapter qualified one team for state consisting of Nick Anderson, Seth Hald, Jaime Bialas, and Brenden Kreutzer. Holdrege had two other teams receive blue ribbons and one team received a red ribbon. The four members who competed at the state land judging contest traveled to Wahoo on November 2<sup>nd</sup>. Senior Nick Anderson earned a white ribbon. Senior Seth Hald earned a pink ribbon.

In November, the Holdrege FFA Chapter competed at the district livestock judging contest in Hastings. Thirty-five of Holdrege’s Ag Education Program students participated in the contest. Holdrege’s Sr. Livestock Judging team placed sixth in the contest and qualified for state and will compete in that contest in April. Members of this team include Austin Marquardt, Marcus VanEperen, Nicole Gerdes, and Zach Gray. In the junior division, Ethan Johnson, Trevor Smith, Jamie Bialas, and Clayton Fritson earned blue ribbons. The chapter also came home with 3 white ribbons. In the senior division, Holdrege placed 6<sup>th</sup>. Austin Marquardt earned a purple ribbon at 4<sup>th</sup> place. Zach Gray earned a red ribbon, and Marcus VanEperen earned a white ribbon.

The first week of December will see the FFA Chapter delivering Fruit Sales Products that were ordered in November. Delivery of products is expected to start on December 6<sup>th</sup> and be completed by December 10<sup>th</sup>. Any customers who ordered products should be contacted by FFA members that week

to set-up delivery of products. Upcoming activities for January will include State Degree and Proficiency Award Applications, Leadership Night and Leadership Skills Events.

The Ag Education Department's biggest change has been the addition of the new school greenhouse. The new 24' by 48" house was completed in August with the help of Melroy Construction and Ed' Electric and volunteer labor from several of the FFA members. Plant Systems students were assigned a project of producing a crop of poinsettia plants, which have been sold through the FFA Fruit Sales Program in the fall. Through this project the students have gained hands on skills in plant propagation, fertilizers, insect identification, chemical application safety and management and monitoring growth rates of the plants. The spring of 2012 will see a new Nursery & Landscape class and Intro to Ag class develop and produce several spring bedding plants and containers that will be available for sale in early May.

**FROM THE GUIDANCE OFFICE:**\*All students and staff are asked to be very generous next week as the high school hosts its annual food can drive. \*The LOCK-IN will be held this Saturday from 9:00pm to 1:00am. The cost is \$3 each.



**Seniors:** Remember to get your income tax information and your parents' information ready for the FAFSA. It can be sent in any time after the first of the year. I want all college applications completed before the Christmas break. Keep watching the scholarship list, it will start getting longer every day.\*Vicki Klein will come to HHS on December 8<sup>th</sup> to explain the Phelps County Community Foundation's scholarship program.

**Juniors:** PSAT scores will be back next week, we'll go over them soon. Your ASVAB results will be interpreted on the 6<sup>th</sup> and 7<sup>th</sup> of December in English class. \*All juniors should have their 2<sup>nd</sup> semester schedules worked out by December 7<sup>th</sup>.

**Sophomores:** I hope all 10th graders took your PLAN score reports home to your parents and went over your results. \*You can finish any schedule changes from December 8<sup>th</sup> to the 14<sup>th</sup>.

**Freshmen:** \*If your schedule needs revising see me between December 15<sup>th</sup> and the 22<sup>nd</sup>.

## *Prom Dress Code Reminder*

Prom is an important and integral part of the school experience at Holdrege High School and for the Holdrege community. Prom provides an opportunity for students and faculty members to interact at a formal social event. Preserving prom as a formal social event and positive learning experience for students is a priority for Holdrege High School.

Everyone attending prom, including guests, is expected to dress and behave appropriately for a formal evening social event. This would include the following guidelines:

- Young men are expected to wear formal evening attire that would include a tuxedo, suit with a tie, or sport coat and slacks with a tie.
- Young women are expected to wear formal evening attire that would include a formal evening gown or other similar dresses/outfits. Dresses may not expose a bare midriff or have a side slit higher than the tips of the wearer's fingers when the wearer's hands are at her sides. Two-piece dresses/outfits are allowed provided that they do not expose any midriff.
- Body piercings other than those in the ear are not allowed.
- Exposed tattoos are not allowed.
- Public displays of affection other than holding hands are not permitted.
- All other Holdrege High School behavior rules will apply for the entire evening.

Prom is intended to be a fun and positive learning experience for all students. The above guidelines will be enforced for the prom dinner and dance. Faculty members will make the final decision as to whether a student's dress and behavior are appropriate. Students and guests may be asked to leave prom if their dress or behavior does not meet the above guidelines.

The Holdrege Public School does not discriminate on the basis of race, color, national origin, gender, marital status, disability, or age in admission or access to, or treatment of employment, in its programs and activities. The following person(s) has/have been designated to handle inquiries regarding complaints, grievance procedures or the application of these policies of nondiscrimination:

Title: Mr. Todd Hilyard, Superintendent of Schools  
Address: 505 14th Avenue, Holdrege, Nebraska 68949  
Phone #: 308.995.8663

If parents, employees and students do not feel that their complaints regarding Title IX, Title VI, Section 504 have met with resolution at the local level, they can appeal their grievances to the regional Department of Education, Office for Civil Rights. All appeals should be directed to the following address:

Office for Civil Rights  
8930 Ward Parkway, Suite 2037  
Kansas City, MO 64114  
816-268-0550  
FAX: 816-823-1404; TDD: 800-437-0833

# COLLEGE YOUR WAY!



Campuses in Columbus • Grand Island • Hastings  
Centers in Holdrege • Kearney • Lexington  
Community Learning Sites in 70 Locations

**If you choose the right college,  
you can live your life and earn  
your degree – at the same time!**

**What's holding you back from taking college classes?**

- My schedule is too busy
- I can't get to a campus
- I don't have the money
- I work full time
- I don't know how to register
- Not sure what I want to study

*(Feel free to check all that apply, we understand!)*

QUALITY AND FLEXIBILITY!

## Let Us Help You.

We understand it can be difficult for adults to fit college into an already full life. That's why Central Community College offers a distance learning program that works around *your* schedule and meets *your* needs for flexibility, quality, and convenience. It's called **College Your Way**.

Regardless of your location or schedule, CCC's **College Your Way** gives you access to hundreds of college courses and a variety of degree programs. Take classes online, through paper packets, and in certain locations, over interactive video. Choose between self-paced or instructor-paced courses. **College Your Way** gives you the flexibility to achieve your goals *your way*.

## College Your Way

Central Community College understands that our students have different goals, different lifestyles and different needs. To help all of our students be successful, we offer classes and programs in a variety of delivery formats:

- Online classes (instructor-paced):** convenience, and with structure for those who want it.
- Online classes (self-paced):** convenience, and with flexibility for those who need it.
- Packet classes:** the flexibility that comes from working at your own pace
- Lecture classes:** structured, with plenty of instructor and student interaction

QUALITY!  
FLEXIBILITY!  
College Your Way

Registration is going on now for Spring classes. Spring semester begins January 9.



Central Community College is an Equal Opportunity/Affirmative Action Institution.

*Call or click to register today!*

**877-222-0780**

**[www.cccneb.edu/learningcenter](http://www.cccneb.edu/learningcenter)**

**For information about financial aid, degree programs, and how to register,  
contact your local Learning Center Manager (information on back).**

## Distance Learning From Central Community College

COLLEGE YOUR WAY!

**Alma (#399)**  
TBA; for information, contact:  
CCC-Holdrege Center  
Diana Watson  
877-222-0780, Ext. 6102  
E-Mail: [dwatson@cccneb.edu](mailto:dwatson@cccneb.edu)

**Axtell (#854)**  
Mosaic-Human Resource Bldg  
Beth Petersen  
308-743-2696 (h)  
Tuesdays, 6-9 p.m.

**Blue Hill (#613)**  
Blue Hill Elementary School-Library  
Glenda Shaw  
402-756-4167 (h)  
E-Mail: [jshaw@gtmc.net](mailto:jshaw@gtmc.net)  
Mondays, 6:30-8:30 p.m.

**Clay Center (#137)**  
Clay Center Elem Sch-Media Center  
Doris Hoyt  
402-762-3561 (w) or 402-762-5633 (h)  
E-Mail: [dhoyt@esu9.org](mailto:dhoyt@esu9.org)  
Wednesdays, 4-7p.m.

**Franklin (#243)**  
Franklin Public Schools-Art Room  
Janet Guge  
308-425-6283, Ext. 49 (w)  
E-Mail: [jguge@esu11.org](mailto:jguge@esu11.org)  
Wednesdays, 4-7 p.m.

**Harvard (#755)**  
Harvard Public School-Meeting Rm  
Rae Ann Lurk  
402-461-2429 or 877-222-0780,  
ext 2429 (w)  
or 402-772-2007 (h)  
E-Mail: [rlurk@cccneb.edu](mailto:rlurk@cccneb.edu)  
Mondays, 6-7:30 p.m.

**Hastings (#107)**  
Hastings Public Library-2nd Floor  
Sondra Meyer  
402-461-2457 or 877-222-0780,  
Ext 2457 (w)  
or 402-463-7159 (h)  
E-Mail: [smeyer@cccneb.edu](mailto:smeyer@cccneb.edu)  
Tuesdays & Thursdays, 6-9 p.m.

**Holdrege HS Students Only (#565)**  
Holdrege High School Guidance Office  
Pat Nelson  
308-995-8988 (w)  
E-Mail: [pnelson@esu11.org](mailto:pnelson@esu11.org)  
M-Th, 8 a.m.-4 p.m.; F, 8 a.m.-3 p.m.

**Kenesaw (#844)**  
Kenesaw Public School-Library  
Linda Eberle  
402-462-4187, x-153 (w) or 752-8102 (h)  
E-Mail: [leberle@hshn.org](mailto:leberle@hshn.org)  
Mondays, 6:30-9:30 p.m.

**Lawrence (#723)**  
Lawrence/Nelson Elem School-Library  
Linda Kohmetscher  
402-756-7522 (h)  
E-Mail: [wlkohm@gtmc.net](mailto:wlkohm@gtmc.net)  
Mondays, 7-9 p.m.

**Loomis (#498)**  
111 Sunset Drive  
Nancy Cruise  
308-876-2346 (h) 308-991-8584 (c)  
By appointment

**Minden (#655)**  
Minden High School-Rm #15  
Joe Green  
308-832-2254 (w)  
Tuesdays, 7-8:30 p.m.

**Nelson (#503)**  
Lawrence/Nelson High School-Library  
Debbra Troutt  
402-461-2458 or 877-222-0780,  
Ext 2458 (w)  
or 402-225-3046 (h)  
E-Mail: [dtroutt@cccneb.edu](mailto:dtroutt@cccneb.edu)  
Wednesdays, 7-10 p.m.

**Orleans (#405)**  
CB Preston Memorial Library  
Raylene Stephens  
308-473-3425 (w) or 868-4121 (h)  
E-Mail: [olibry@atcjet.net](mailto:olibry@atcjet.net)  
Mondays, 5-8 p.m.

**Red Cloud (#624)**  
Red Cloud Elementary School-Office  
Brian Hof  
402-746-3413 (w)  
E-Mail: [bhof@esu9.org](mailto:bhof@esu9.org)  
Wednesdays, 4-7 p.m.

**Sandy Creek (#764)**  
Sandy Creek Schools-Office  
Deb Ridgway  
402-726-2151 (w)  
E-Mail: [dridgway@esu9.org](mailto:dridgway@esu9.org)  
Wednesdays, 7-9 p.m.

**Silver Lake-Roseland (#942)**  
Silver Lake High School-Media Ctr  
Chris Sluka  
402-756-6611 (w) or 756-6718 (h)  
E-Mail: [csluka@esu9.org](mailto:csluka@esu9.org)  
Wednesdays, 6:30-9:30 p.m.

**Superior (#510)**  
Superior High School-Library  
Cindy Thornton  
402-879-3257 (w) or 879-4683 (h)  
E-Mail: [cpthornton@yahoo.com](mailto:cpthornton@yahoo.com)  
Wednesdays, 6-9 p.m.

**Sutton (#144)**  
Sutton High School-HS Library  
Sharon Zoucha  
402-773-4303 (w) or 773 0201 (h)  
E-Mail: [szoucha@spsne.org](mailto:szoucha@spsne.org)  
Wednesdays, 4-7 p.m.

### Central Community College - Holdrege Center (#525)

1308 2nd Street (Phelps County Ag Center)  
Open Monday through Friday, including selected evenings  
Wi-fi access, computer lab, and video conference classrooms available

#### Staff

Diana Watson, Regional Coordinator	<a href="mailto:dwatson@cccneb.edu">dwatson@cccneb.edu</a>	308-995-6102
Shelly Stump, Administrative Assistant	<a href="mailto:shstump@cccneb.edu">shstump@cccneb.edu</a>	308-995-6104
Elaine Redfern, Learning Center Mgr. (Wednesdays, 4-7 p.m.)	<a href="mailto:sredfern@cccneb.edu">sredfern@cccneb.edu</a>	308-995-8133
Linda Boylell, Office Clerk	<a href="mailto:lboyll@cccneb.edu">lboyll@cccneb.edu</a>	308-995-8133

